

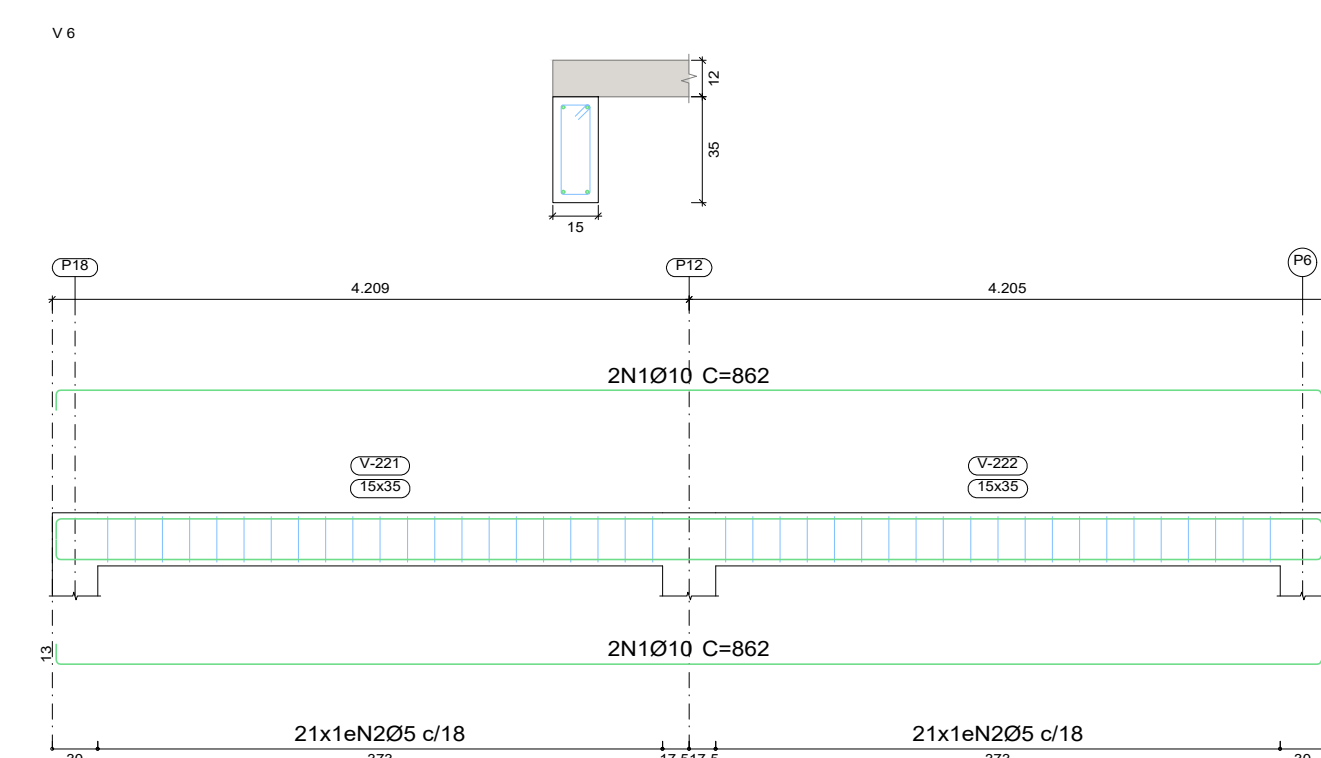
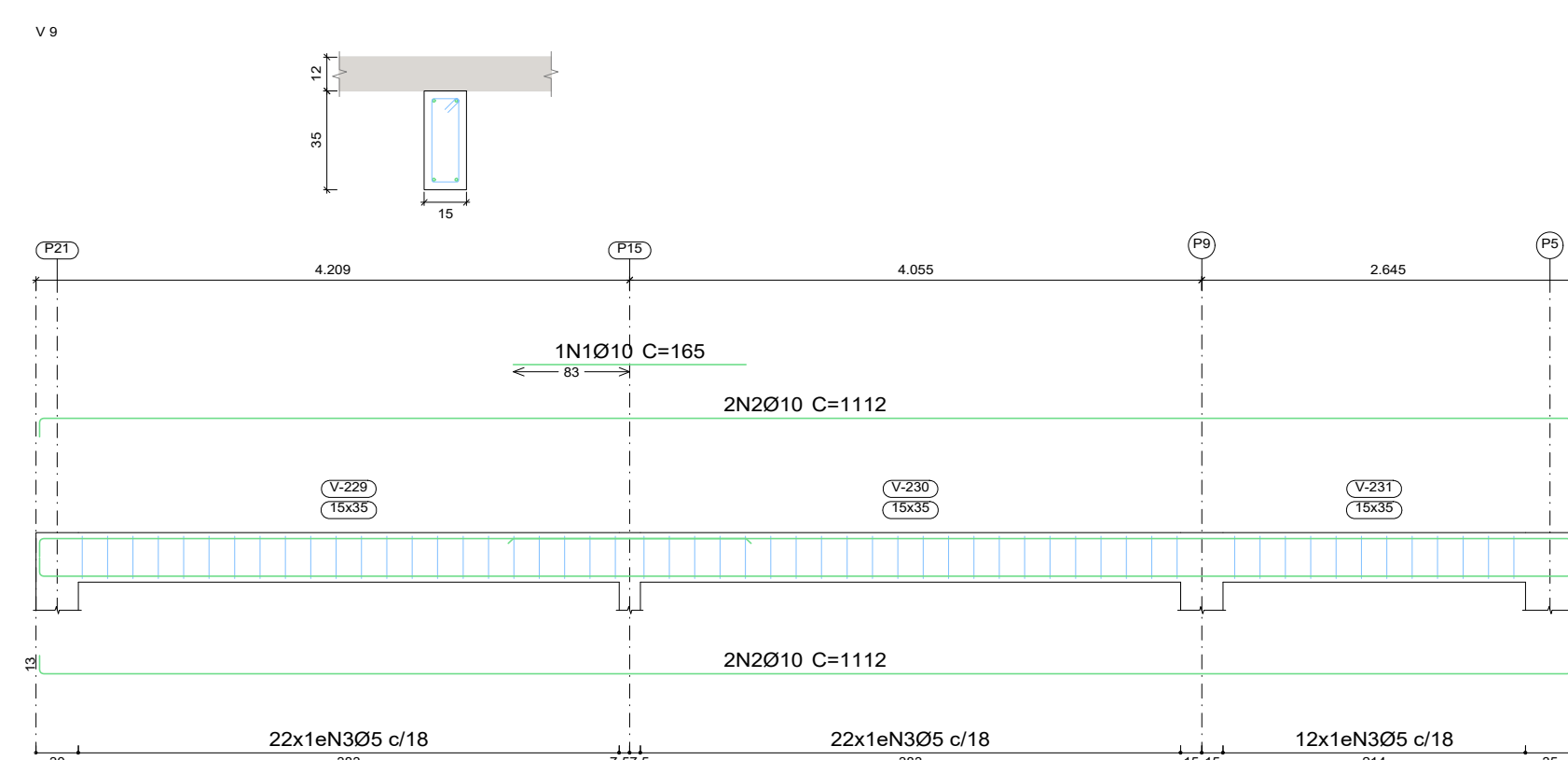
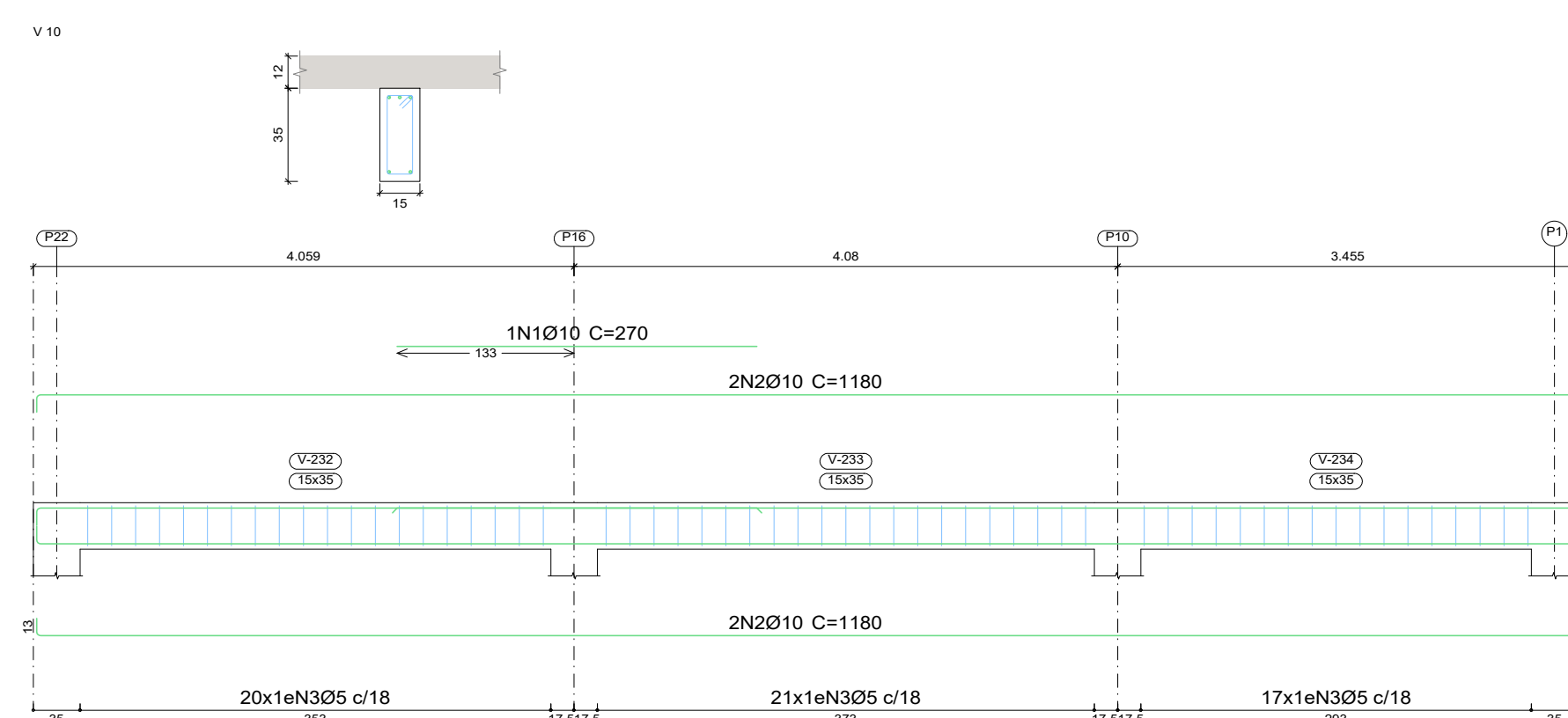
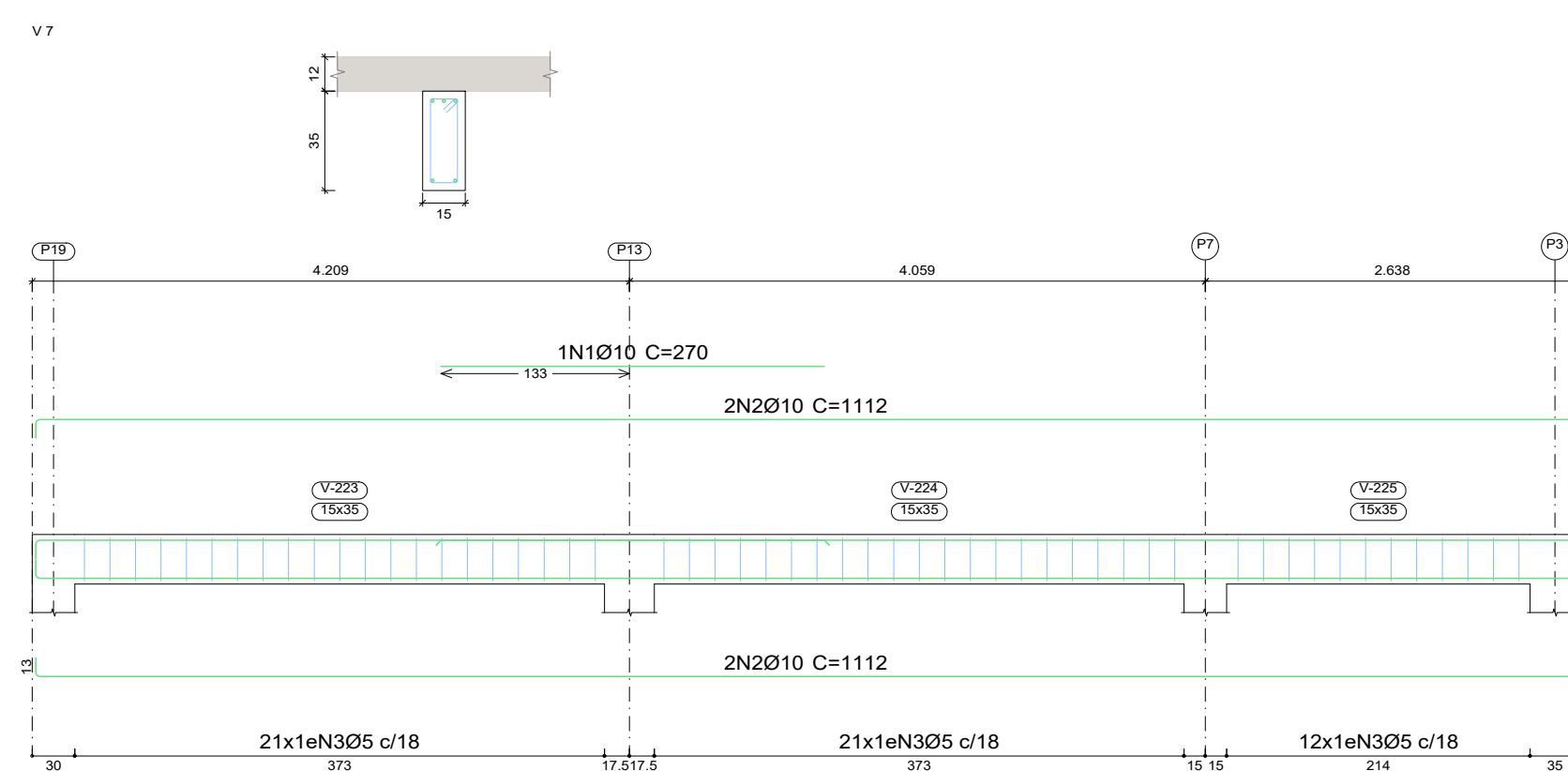
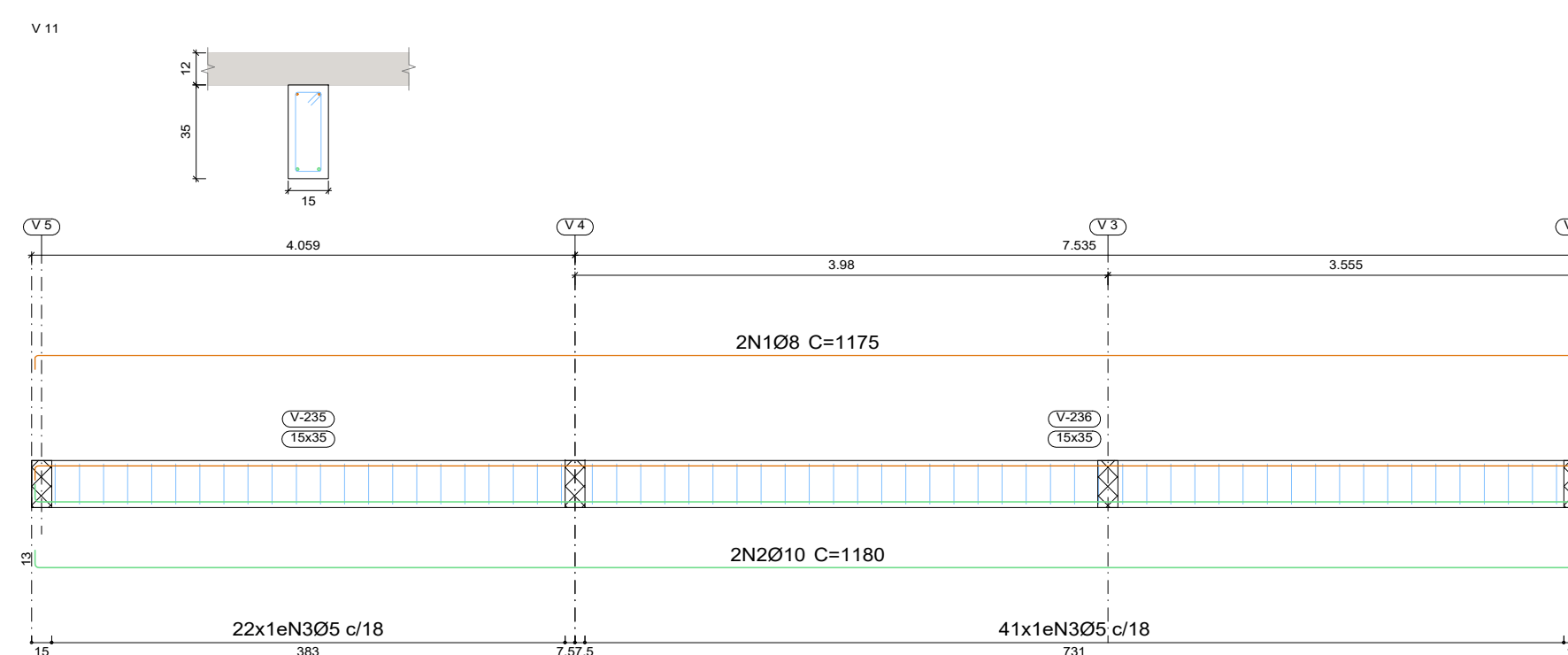
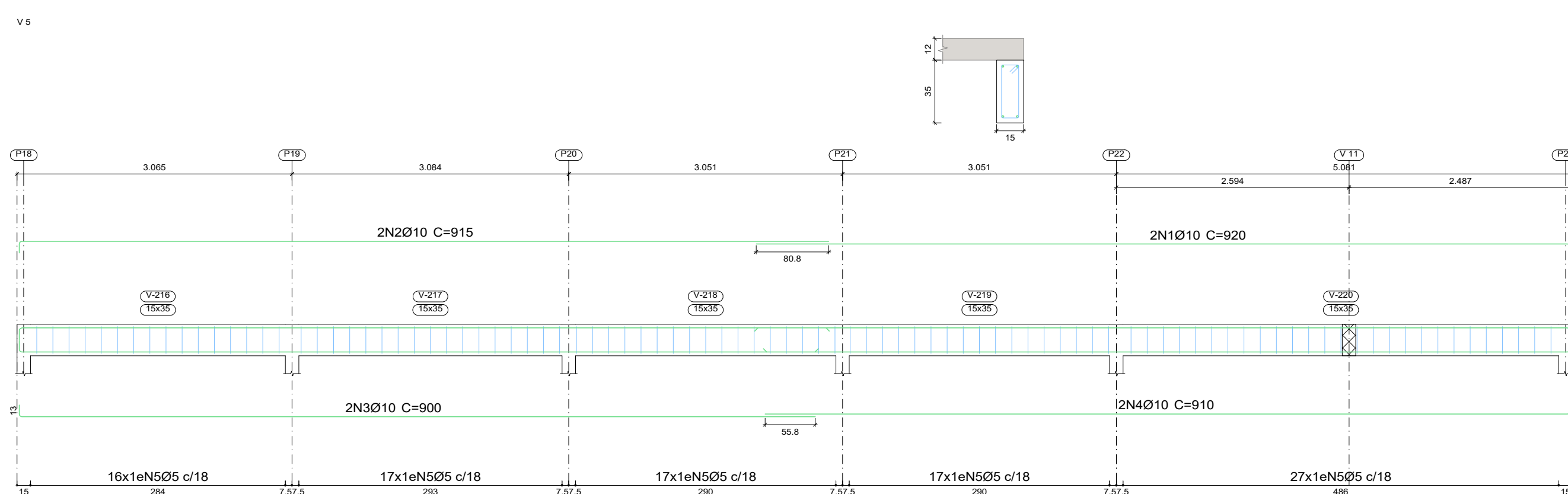
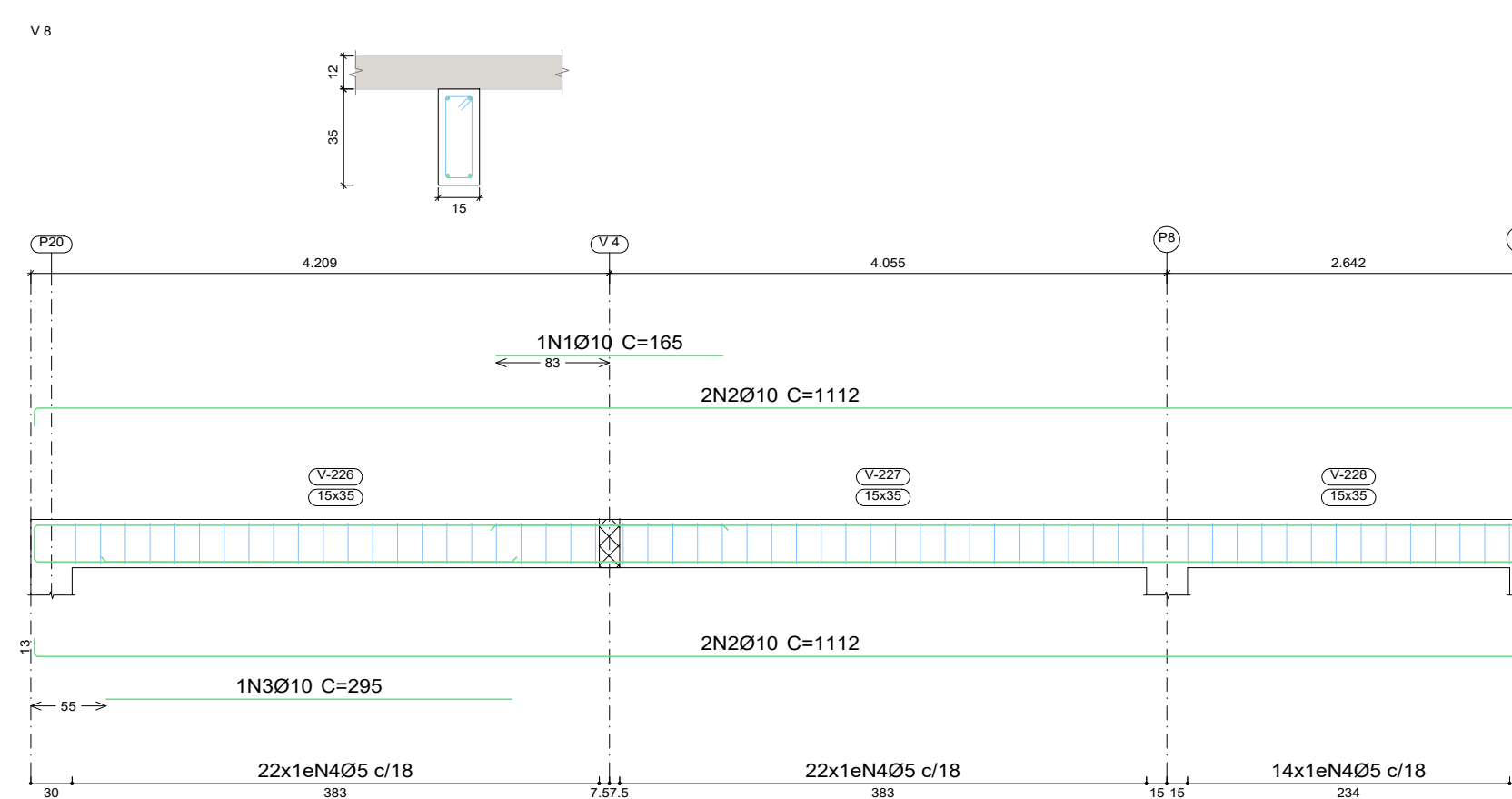
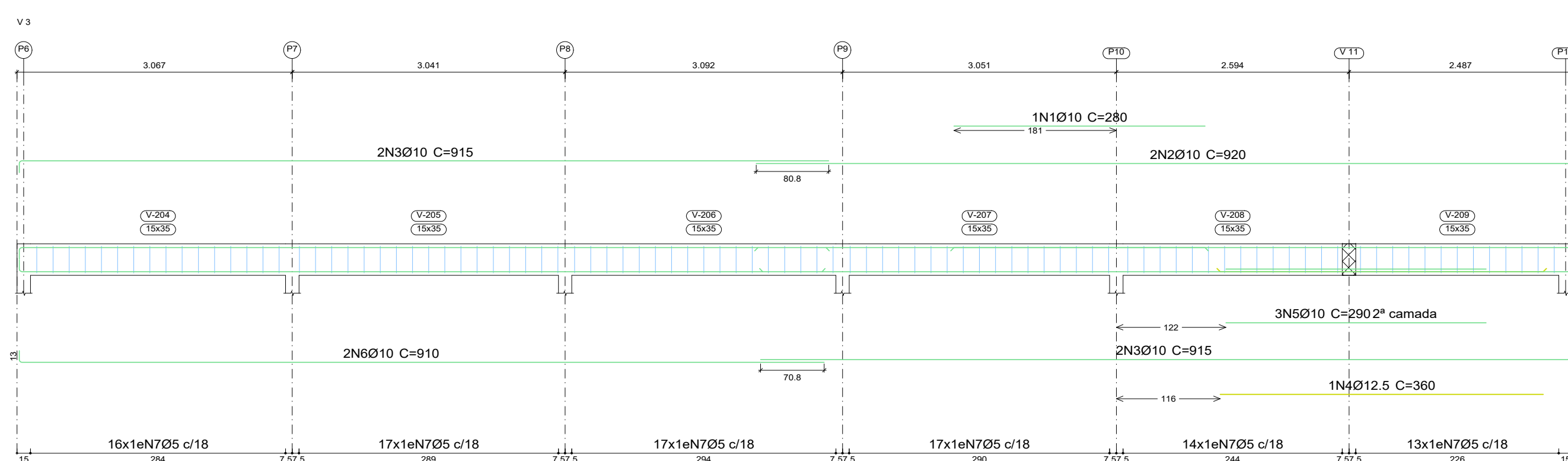
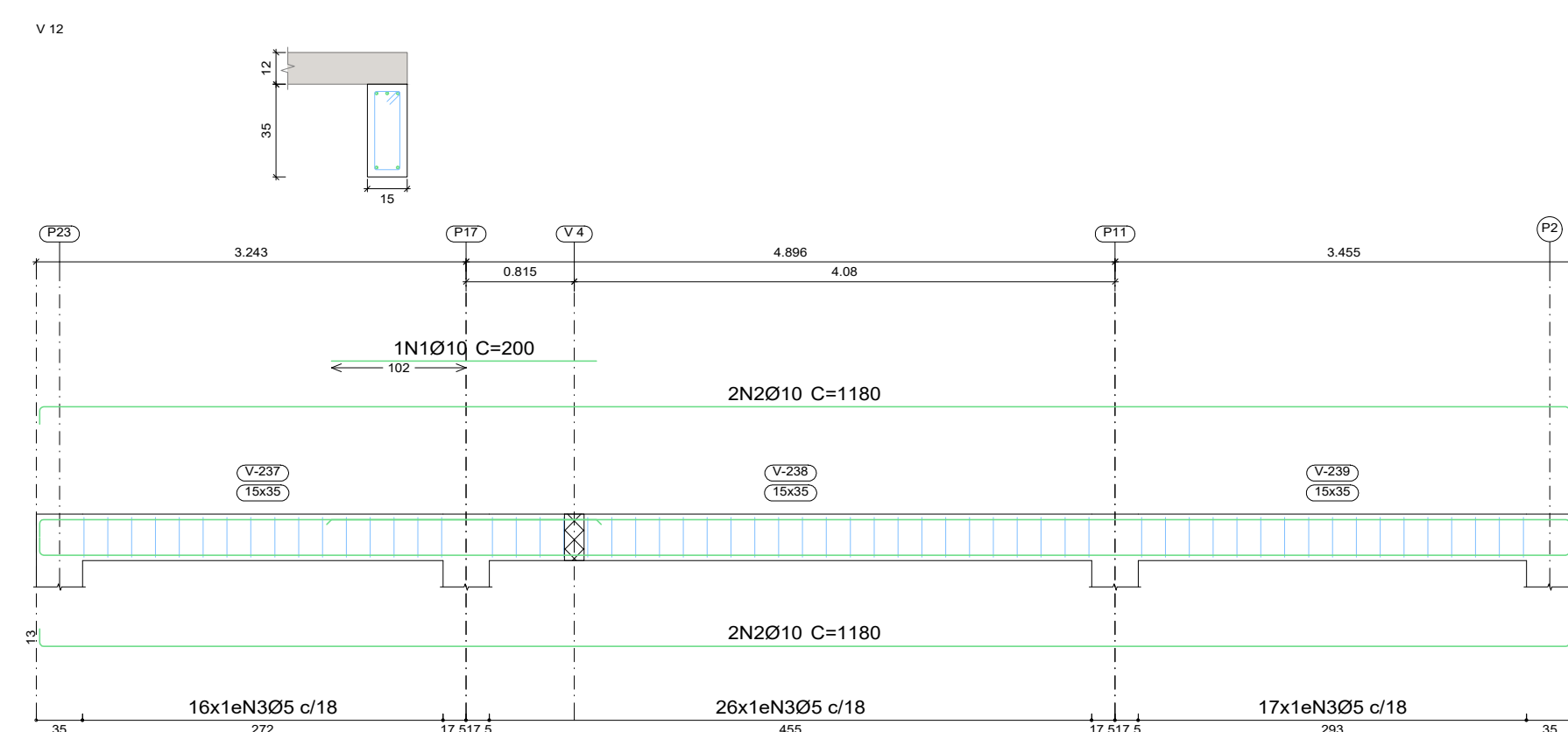
Technical drawing of a bridge deck cross-section and longitudinal layout.

Cross-section (Top): Shows a 16m wide deck with a 1.5m high parapet and a 1.2m wide base. The total width is 16m.

Longitudinal Section (Bottom): Shows the bridge deck layout with various lane markings and dimensions.

Dimensions and Markings:

- Deck width: 16m
- Parapet height: 1.5m
- Base width: 1.2m
- Longitudinal dimensions: 0.0, 7.5, 15.0
- Lane markings: 16x16m725 c/18, 17x16m725 c/18, 16x16m725 c/18, 16x16m725 c/18, 27x16m725 c/18
- Other markings: 2N2010 C=900, 1N1012.5 C=340, 2N2010 C=900, 2N2010 C=900, 2N2010 C=900, 1N4012.5 C=325



Resumo Aço Desenho de vigas	Comp. total (m)	Peso+10% (kg)	Total
CA-50 Ø8	49.7	22	
Ø10	547.1	371	
Ø12.5	25.5	27	420
CA-60 Ø5	643.3	111	111
Total			531